

FRICKLEY PARK
HORSE TRIALS

Frickley Park International Horse Trials

Featuring Regional Championships



16th- 18th August 2024

By kind permission of Charlie & Jayne Warde-Aldam

 Frickley Park Horse Trials

 @FrickleyParkHT

 @frickleyparkhorsetrials



Dressage



Showjumping



Cross Country



Welcome to Frickley 2024

A warm welcome to Frickley Park, for what is a very busy, yet exciting, fixture. It is great to see a huge range of classes at Frickley, from BE80 to International CCI-S 3* with some of the best riders and horses in the country tackling our XC courses. A new addition for 2024 - The Frickley Cup Three Day Event for BE90 and BE100 competitors.

It is also a very warm welcome to all the grassroots competitors who have travelled from across the country to compete in our Regional Final classes. We have been supported by a great range of sponsors, the benefits of which we have been able to pass on in the form of some great prizes from BE80 level through to our International 3* class.

As ever the Frickley Estate staff have been working really hard preparing the site for the event and our cross country course builders have created some fantastic looking tracks! We are thankful to Jayne and Charlie for their never ending commitment to our sport. The prolonged wet weather at the start of the year has fuelled incredible growth across the estate over the last few months and despite the recent drier warmer weather all the tracks and arenas have been maintained to provide the best going possible. We have also opened up new areas of the parkland, as we continue to develop venue for the sport of eventing.

Thank you so much to all our amazing volunteers for giving up their time over the weekend to allow us to enjoy our sport – without them, none of this would have been possible. We have some volunteers who are helping out, free of charge, over all three days, which is a huge commitment and for which we are deeply grateful.

Please could you take a few moments during your time at Frickley to thank all our volunteers. We hope you all have a great and enjoyable time at Frickley.

Organisers – Vanessa Fleming, William Buck, Charlie Warde-Aldam

Organisers and Officials

Event Directors

Vanessa Fleming
William Buck
Charlie Warde-Aldam

Landowner

Charlie Warde-Aldam

BE Steward/Chief Steward

Lindy Best

BE Technical Adviser

Jonathan Clissold

BE Scorer

Sue Thompson

Ground Jury 2*

Tracey Trotter
Elizabeth Gammie

Ground Jury 3*

Adrian Buzzard
Donna Smith

Event Secretaries

Rachel Ackroyd
Lindsey Conway

Site Manager

Jamie Birkett

Doctors

Dr Graham Russell
Dr Emma Rowland

FEI Vet Vet

Tim Booth
Hird & Partners

Health & Safety Officer

Mark Chambers

Chief Dressage Steward Chief Dressage Scorer Chief Show Jumping Steward Chief XC Stewards

Sharon Hepworth
Julie Bradshaw
Richard Poad- Baker
Cathy Hewitt

XC Designers Ass. Designer

Adrian Ditcham
David Carpenter

SJ Builder

Lisa Kelly

2024 Sponsors

Sponsors

Ideal Financial Management

Heck Foods!

Animalintex

UVEX

Robinson Healthcare

Equireel

Rippon Farm

Openfield

Poskitt Carrots

Throstlenest Saddlery

The Team at Frickley Park International Horse Trials would like to thank all of our kind sponsors for their support.

IDEAL

Financial Management Ltd.

"to protect & to prosper"

now in our 10th year of sponsoring:

FRICKLEY PARK HORSE TRIALS

IDEAL is one of Yorkshire's leading providers of
Independent Financial Advice

Contact us for independent advice on:-

Retirement Planning
Investments
Savings
Protection
and much more

Tel: 01302 880140

142 Thorne Road
Edenthorpe
Doncaster DN3 2LU

dave@idealfinancialmanagement.co.uk
www.idealfinancialmanagement.co.uk



Ideal Financial Management Ltd is Regulated by the Financial Conduct Authority.
We are entered on the Financial Services register under reference 209535.



uvex exxceed MIPS

**WINNER of the Spoga Horse TOP
INNOVATIONS 2024 Award**

Mips

uvex

uvex

uvex

Event Health & Safety Statement

General

1. The Event Organisers, William Buck and Vanessa Fleming, have overall responsibility for the health and safety and appoint a Health and Safety Steward, Mark Chambers, to ensure that all applicable Health and Safety obligations are complied with and to seek to ensure the health, safety and welfare of all competitors, spectators, helpers, volunteers and horses.
2. The Organisers undertake to run the event in accordance with all British Eventing (BE) rules and guidance.
3. The Organisers have undertaken to ensure that all Chief Stewards appointed by them have received, read and understood the relevant guidance to ensure that they are aware of the rules, requirements and standards that relate to their area of responsibility.
4. Everyone on site must comply in full with all guidance provided by British Eventing relating to eventing during the Covid-19 pandemic (details available on the British Eventing website). Any failure to comply with any of the guidance will result in individuals, including competitors, being asked to leave the site immediately.

Officials

1. All officials, judges and stewards are briefed in their duties and provided with the relevant equipment to carry out those duties.
2. All officials, judges and stewards are required to immediately bring to the attention of the Health and Safety Steward, and all BE officials on site, any concerns they have, whether to competitors, members of public, other officials and horses.
3. All officials, judges and stewards must conduct themselves in a matter not to put themselves or any one else at risk and to maintain control in all areas in which they are operating.

Event Health & Safety Statement

4. The BE officials and the Health and Safety Steward are required to ensure that all judges, officials and volunteers are properly briefed as to their duties and are properly equipped and supervised.

Attendee Safety

All reasonable and practical steps have been taken to ensure the health, safety and welfare of all those attending the event, so far as is reasonably practicable. In any event:

1. All attendees are encouraged to read in detail a programme which provides details of the event, timetable and routes of cross country courses.

2. All attendees should be aware of the potential for movement of horses (at speed) without warning and at any location at the event. It is essential that all spectators (without exception) do not walk onto any course or into any arena, and only use stringed and signed crossing points.

3. All attendees must be alert to whistles and PA announcements and pay attention to the same immediately.

4. Due to ground conditions and potential weather conditions, ground conditions will make it difficult for attendees to move around freely and easily. Care must be taken at all times. Spectating is therefore not advised for any one with a medical condition, including any restrictions to movement.

5. The Organisers and Frickley Park Limited are not responsible for any loss or damage caused (except personal injury) caused by any event or default, unless the same has been caused by the fraud or gross negligence of the Organisers and/or Frickley Park Limited. Such limitations of liability include any liability for loss arising from damage or loss of property.

Event Health & Safety Statement

Continued

6. No fires or any type are permitted on any part of the Event and all dogs must be kept on a short lead at all times. Any breach of this requirements will result in the responsible individual being asked to vacate the Event immediately.

Contractors

All contractors are required to observe best working practices at all times and comply with all applicable legislative standards (and standards of recognised best practice).

Emergencies

1. The event provides doctors, ambulances, vets and fence repair personnel during the course of competition. If any of the same are required, please contact an official immediately and an appropriate response will be provided immediately.

2. In addition, emergency personnel outside of the Event can be called upon as required, and if no adequate response is provided from the Event, external resources (including 999) should be called without hesitation. If such external resources are called upon, please ensure that Event officials are informed as soon as possible.



Hird & Partners LLP
VETERINARY SURGEONS

SHEFFIELD EQUINE CLINIC

Now Open

Offering services both in clinic and ambulatory including full lameness work ups, imaging, routine vaccinations, dental examinations and health checks. Free, monthly yard visits available in many areas as well as standard call outs or visit us at our well equipped clinic.



Contact us on **01709 911900**

Sheffield Equine Clinic
Haworth Lane, Rotherham, S60 4NB
www.hirdandpartners.com



Hird & Partners LLP
VETERINARY SURGEONS

**WE ARE
HECK™**

Proud sponsors of

**THE FRICKLEY PARK
HORSE TRIALS**

WWW.HECKFOOD.CO.UK



We're delighted to have Equireel with us filming all the cross country and show jumping action. With a camera at every fence they capture your full round.

Relive the Thrill of Your Round!

Order your Video at
www.equireel.co.uk

Good Luck
to everyone
competing at
Frickley Park
International
Horse Trails
2024



animalintex®

The licensed veterinary poultice
from Robinson Animal Healthcare



The only poultice that may legally be used to treat wounds
• Licensed by the Veterinary Medicines Directorate

Ask for **animalintex®** at your local stockist, call us on
01909 735000 or visit www.robinsonhealthcare.com



Follow us on
Facebook & Instagram
for a chance to enter our
monthly competition

Robinson
animalhealthcare

Frickley Park International CCI3* 2024

Speed: 550 m/min

- 1 Green Roll
- 2 Palisade & Rail
- 3AB Hay Racks
- 4 Log Pile
- 5 Hanging Log
- 6AB Brushes
- 7 Hedge
- 8 Drop Hedge
- 9ABC Triple Brushes
- 10 Trakehner
- 11ABC Water
- 12 Hedge Oxer
- 13 Beech Log
- 14 Dog kennel
- 15 Corner
- 16 Log Corner
- 17ABC Silver Birch Rails & Ditch
- 18 Footbridge
- 19 Gate
- 20AB Drop into Water & Brush corner
- 21AB Quarry
- 22 Finale



Frickley Park International CCI 2** 2024

Speed: 520 m/min

- 1 First
- 2 Pallsade
- 3 Hay rack
- 4 Hayrack
- 5 Open fronted log pile
- 6A Spread
- 6B Crescent
- 7 Hedge rail
- 8 Hedge drop
- 9A Log pile
- 9B Triple brush
- 10AB Water
- 11 Hedge oxer
- 12A Dog kennel
- 12B Corner
- 13AC Silver birch rail
- 13B Ditch
- 14 Triple bar
- 15 Wall
- 16A Log
- 16B Brush
- 17 Corner
- 18 Quarry log
- 19 Curved wall
- 20 The last



Novice

Frickley Park International Novice 2024

Speed: 520 m/min

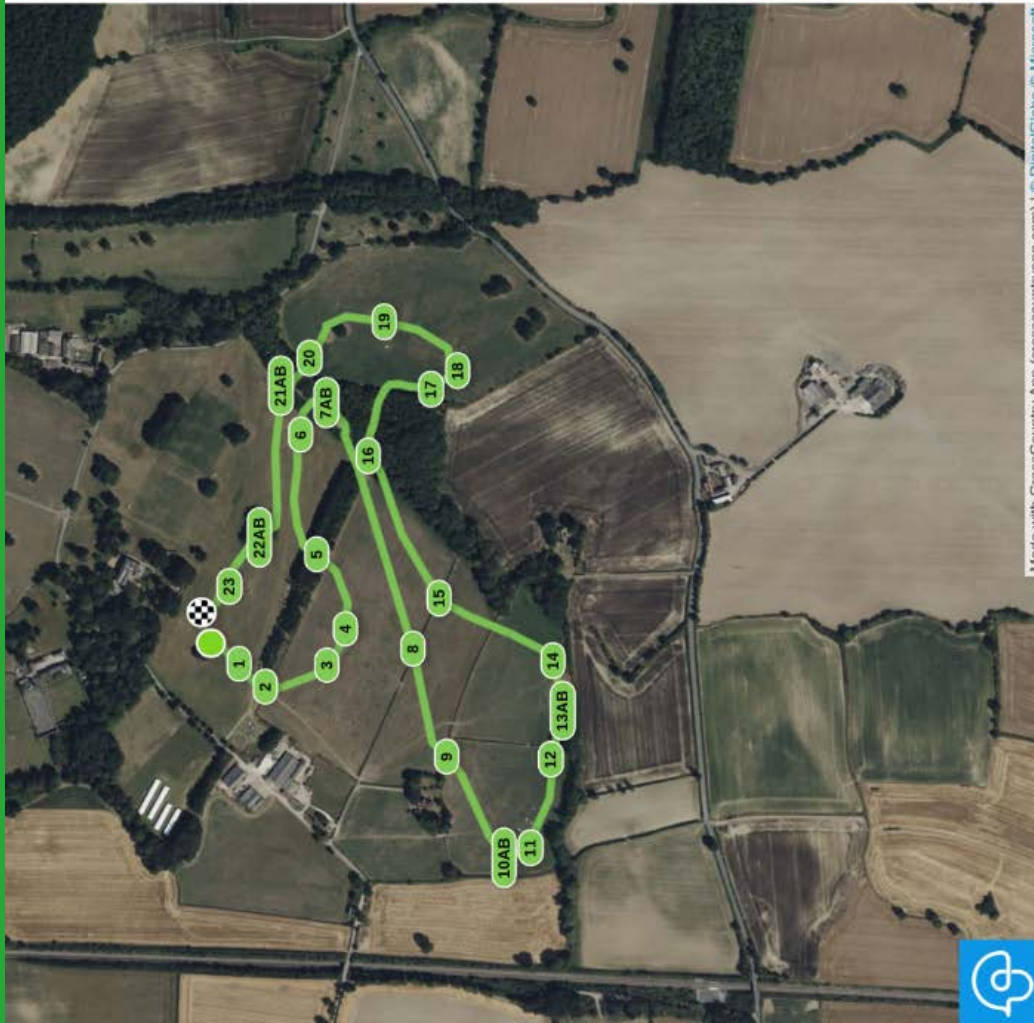
- 1 Green roll
- 2 Pallisade
- 3 Hayrack
- 4 Open fronted log pile
- 5A Spread
- 5B Cressent
- 6 Hedge rail
- 7 Hedge drop
- 8A Log pile spread
- 8B Triple Brush
- 9 Trakehner
- 10ABC Water
- 11 Hedge
- 12AB Dog kennel
- 13 House
- 14 House
- 15 Wall
- 16A Hanging log
- 16B Shoulder brush
- 17 Quarry log
- 18 Curved wall
- 19 The last



Frickley Park International Intermediate 2024

Speed: 550 m/min

- 1 Green Roll
- 2 Palisade & Rail
- 3 Hay Rack
- 4 Hay Rack
- 5 Log Pile
- 6 Hanging Log
- 7AB Brushes
- 8 Hedge
- 9 Drop Hedge
- 10AB Table & Triple Brush
- 11 Triple brush
- 12 Trakehner
- 13AB Water
- 14 Cabin
- 15 Hedge Oxer
- 16 Beech Log
- 17 Dog Kennel
- 18 Corner
- 19 Picnic Table
- 20 Gate
- 21AB Drop into Water & Brush corner
- 22AB Quarry
- 23 Finale

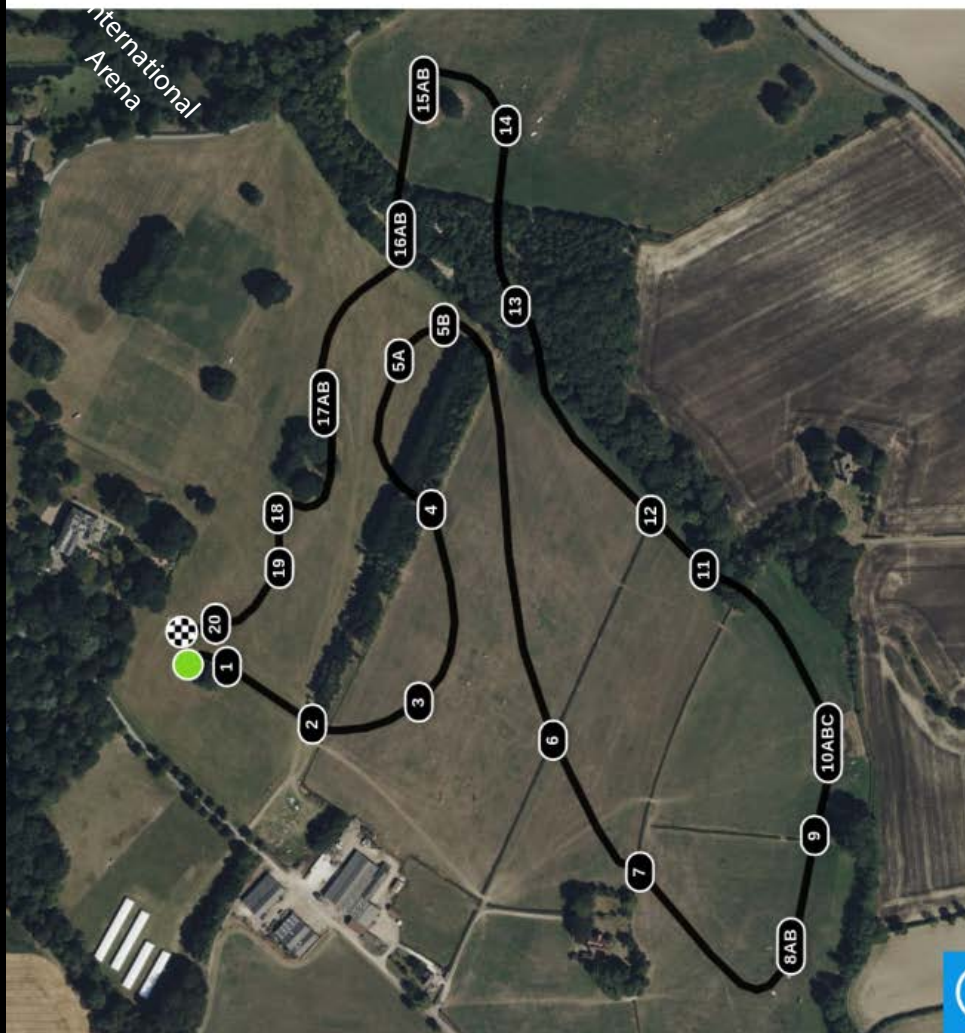


BE100 RCNQ

Frickley Park International BE100RCNQ & 3 day 2024

Speed: 475 m/min

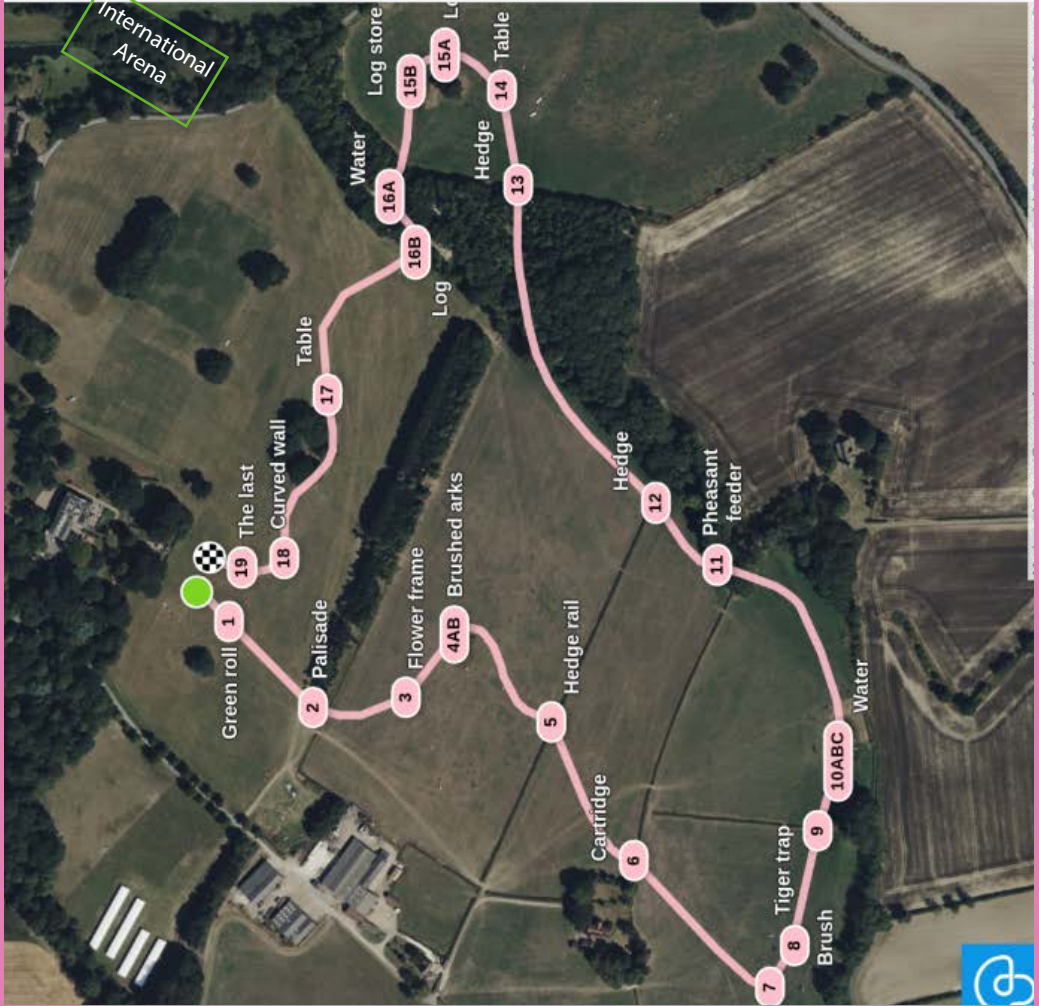
- 1 Green roll
- 2 Palisade
- 3 Flower frame
- 4 Picture frame
- 5A Vaulting horse
- 5B Brush shoulder
- 6 Hedge
- 7 Hedge drop. BF
- 8A Spread
- 8B Double brush
- 9 Tiger trap
- 10ABC Water
- 11 Pheasant feeder
- 12 Hedge rail
- 13 Open ditch palisade
- 14 Picnic table
- 15A Log
- 15B Log store
- 16A Water
- 16B Log
- 17AB Table
- 18 Mim Rail
- 19 Curved wall
- 20 Flower frame



Frickley Park International BE 100 2024

Speed: 475 m/min

- 1 Green roll
- 2 Palisade
- 3 Flower frame
- 4AB Brushed arks
- 5 Hedge rail
- 6 Cartridge
- 7 Spread
- 8 Brush
- 9 Tiger trap
- 10ABC Water
- 11 Pheasant feeder
- 12 Hedge
- 13 Hedge
- 14 Table
- 15A Log
- 15B Log store
- 16A Water
- 16B Log
- 17 Table
- 18 Curved wall
- 19 The last



Frickley Park International BE 90

Speed: 450 m/min

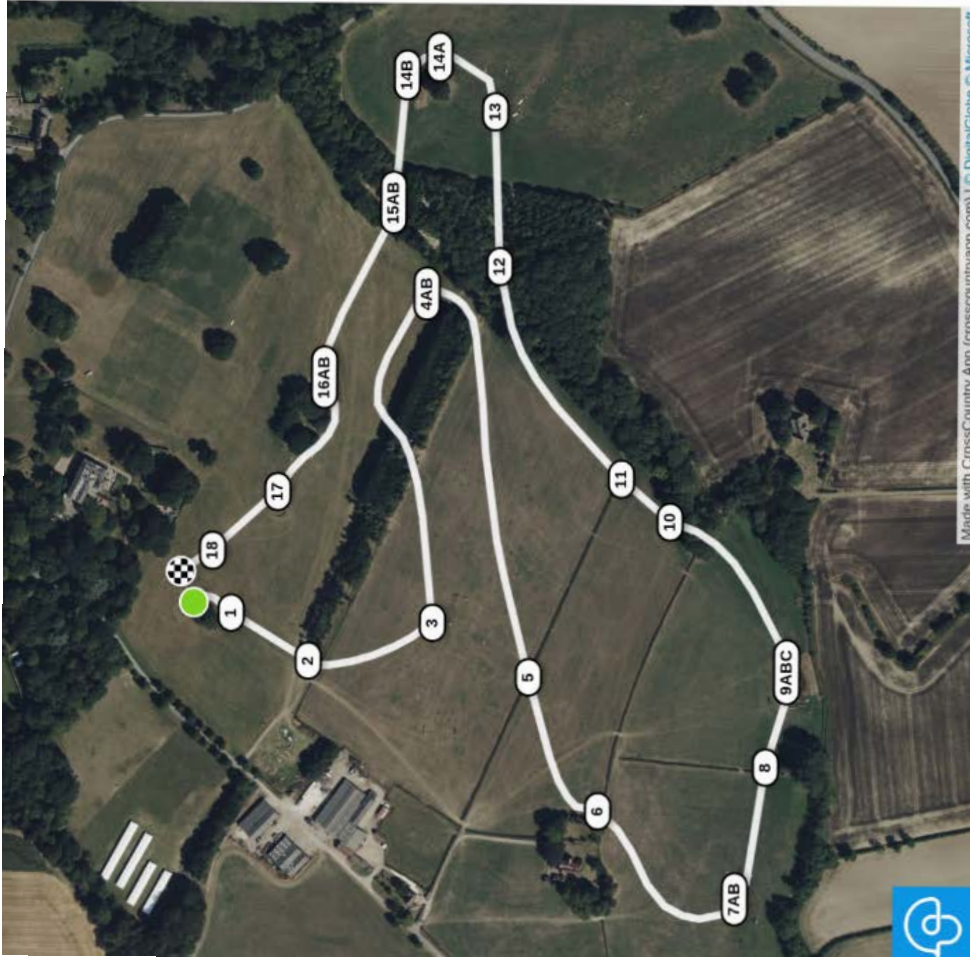
- 1 Green roll
- 2 Palisade
- 3 Flower frame
- 4 Brushed ark
- 5 Hedge rail
- 6 Brushed roll
- 7A Spread
- 7B Angled brush
- 8 Tiger trap
- 9ABC Trunk. Water
- 10 Pheasant feeder
- 11 Hedge rail
- 12 Log pile
- 13 Log trailer
- 14AB Vaulting horse
- 15A Water
- 15B Log
- 16AB Oak logs
- 17 Curved Wall
- 18 Flower frame



Frickley Park International BE 90RCNQ & 3Day 2024

Speed: 450 m/min

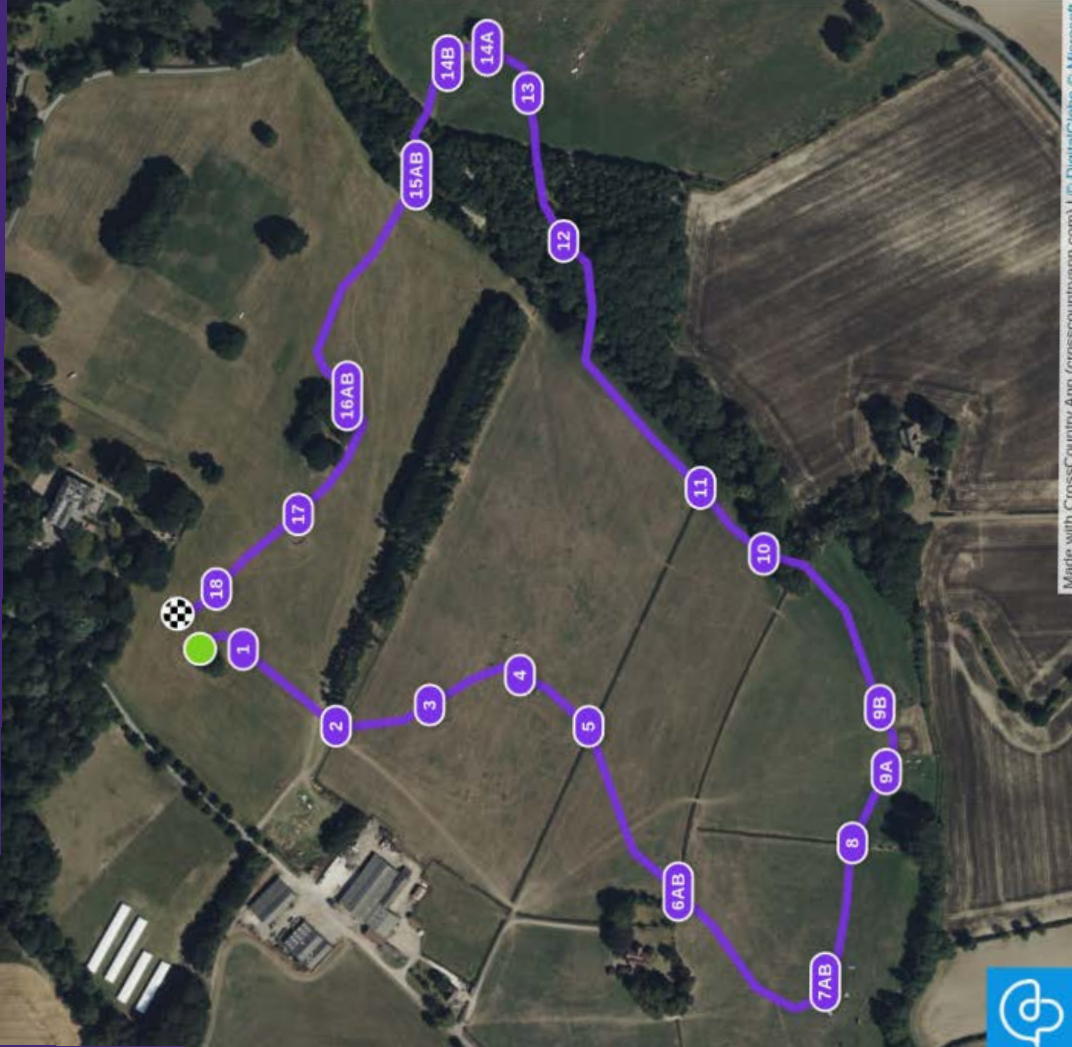
- 1 Green roll
- 2 Pallsade
- 3 Flower frame
- 4A Vaulting Horse
- 4B Vaulting horse
- 5 Hedge
- 6 Cartridge
- 7A Spread
- 7B Double Brush
- 8 Tiger trap
- 9AB Trunk. Water
- 9C Arrow head
- 10 Pheasant feeder
- 11 Hedge
- 12 Open ditch brush. BF
- 13 Log trailer
- 14AB Vaulting horse
- 15A Water
- 15B Log
- 16AB Seats
- 17 Wall
- 18 Flower frame



Frickley Park International BE 80 & RCNQ 2024

Speed: 435 m/min

- 1 Green roll
- 2 Palisade
- 3 Flower frame
- 4 Hayrack
- 5 Rail
- 6AB Cartridge
- 7AB Double brush
- 8 Tiger trap
- 9A Water
- 9B Arrow head
- 10 Pheasant feeder
- 11 Hedge
- 12 Log pile
- 13 Timber trailer
- 14A Log
- 14B Saw bench
- 15A Water
- 15B Log
- 16AB Seat
- 17 Wall
- 18 Flower frame



Openfield™



Seed, fertiliser, grain, storage.

The Openfield Partnership: More than just grain.

Premium products and services to
help get the best for your business.

As one of Britain's most successful co-operatives,
we're committed to putting our members' needs first.

Our range of innovative and flexible marketing tools are designed to help you manage risk and enhance your crop values. We also provide storage facilities, a wide selection of seed varieties and the best-quality fertiliser.

Join us today. Call your local Farm Business Manager on 01937 848 100.



www.openfield.co.uk

British grain for British food and drink.

Julia Shearwood Photography



Have a fantastic event!

Check our website each day for all
your competition images

<https://www.equestrianphotography.co.uk/>

throstlenest

saddlery

Established in 1978, Throstenest Saddlery have been supplying a wide range of horse riding clothes and equestrian equipment from horse saddles to horse rugs for over 20 years.

01226 790497

www.throstenestsaddlery.co.uk

Off Moored Lane
Silkstone Common
Barnsley
S75 4QX

Poskitts 
vegetable farmers & growers

**GET THE
LAURA
LOOK**



uvex

RECEIVE
10% DISCOUNT
OFF ANY ORDER
ONLINE*

Simply visit our website
www.equineproducts-ukltd.com
or scan this QR code, then at the
checkout use code: **MARCIA10**



For more information on products, prices
and special offers, please contact

MARCIA THOMPSON

Northern Sales Representative
& Account Manager
07715 659929
marcia@equineproducts-ukltd.com

+44 (0) 191 264 5536

info@equineproducts-ukltd.com

DOWNLOAD OUR APP HERE



RIPON
farm services

FOR NOW.
AND THE FUTURE



YOUR MACHINERY PARTNERS

NEW & USED. PARTS & SERVICE. PLUS ALL THE
HELP & ADVICE YOU NEED.

Great North Road, Darrington, Pontefract, WF8 3BW
t. 01977 795241

riponfarmservices.com



JOHN DEERE



KRAMER

on the safe side